

LIGHTING FIXTURES FOR HIGH EFFICIENCY LED LAMPS AND FLUORESCENT TUBE LAMPS

Explosion Proof Electrical Equipment



Ex Lighting

Installation: hazardous areas - Zone 1 / 2 (Gases) - Zone 21 / 22 (Dusts)
Classification: Group II - Category 2G 2D

EXL



GOST-R
RTR Ex Proof



	LIGHTING FIXTURE		
	ATEX 94/9/EC	GOST-R (RTR / RTN)	GOST-K
EXECUTION	⊕ II 2 G Ex d IIB T6 ⊕ II 2 D Ex tD A21 T85°C	1Ex d IIB T6, Ex tD A21 T85°C	1Ex d IIB T6, 1Exd [ia/ib] IIB T6, DIP A21 TA 85°C
INSTALLATION	ZONE 1 / 2 - ZONE 21 / 22	ZONE 1 / 2 - ZONE 21 / 22	ZONE 1 / 2 - ZONE 21 / 22
PROTECTION DEGREE	IP66	IP66	IP66
CERTIFICATE REF.	IMQ 09 ATEX 020	POCC IT. ГБ05.Б03654	No. 07/43-269
RULES OF COMPLIANCE	EN 60079-0; EN 60079-1; EN 61241-0; EN 61242-1	ГОСТ Р 52350.0-05 (МЭК 60079-0: 04); ГОСТ Р 52350.1-05 (МЭК 660079-1: 03); ГОСТ Р 52350.5-06 (МЭК 660079-5: 07); ГОСТ Р 52350.7-05 (МЭК 660079-7: 06); ГОСТ Р МЭК 61241-0: 07; МЭК 61241-1: 04	ГОСТ Р 51330.0 / 1 / 8 / 14-99 ГОСТ Р МЭК 61241-1-1-2002

Mechanical characteristics

Body	marine grade copper free aluminium
Diffuser	high-temperature resistant borosilicate glass
Painting	external epoxy powders grey RAL-9006 colour
Screws	external stainless steel
Reflectors	white stove enamelled sheet steel
Cable entry	3/4" NPT size threaded c/w cable gland

Electrical characteristics

Power supply	electronic ballast 220V/240V - 50/60Hz (p.f.corrected - $\cos \phi \geq 0,98$)
Lampholders	bi-pin G5 cap (fluorescent lamp only)
Internal wiring	high-temperature resistant silicon rubber insulation cables
Terminals	suitable up to 4mm/sq cables
Emergency unit	emergency unit with inverter charger and Ni-Cd battery pack see technical features for more details

Functional characteristics

- **EXL08ESA (Always ON - Maintained):** 8W fluorescent lamp and electronic ballast 230V AC and emergency unit 3,6V - 4Ah for an autonomy 3 hours
- **EXL08E (Emergency only - Maintained):** 8W fluorescent lamp and emergency unit 3.6 V - 2Ah with autonomy 3 hours
- **EXL08L (Network only - Not Maintained):** with high brightness LEDs (350mA - 4,8 W) Supply from 120V to 240V AC / DC
- **EXL08LE (Emergency only - Maintained):** with high brightness LEDs (350mA - 4,8 W) 220/240V AC and emergency unit 6V - 2Ah for an autonomy of 3 hours complete with charge status monitor LED system (RED: battery under charging - GREEN: battery loaded)

Remarks

- **EXL08E / EXL08ESA - 8W fluorescent lamp:** emergency light intensity is 40% of light intensity with networking power supply
- **EXL08LE - with high brightness LEDs (350mA -4.8 W):** emergency light intensity is 100% of light intensity with networking power supply

ON REQUEST ACCESSORIES:

- External painting colour on request
- Electronic ballast with voltage supply different than standard
- Threaded cable entry different than standard
- Self-adhesive green label with EXIT sign (language on request)

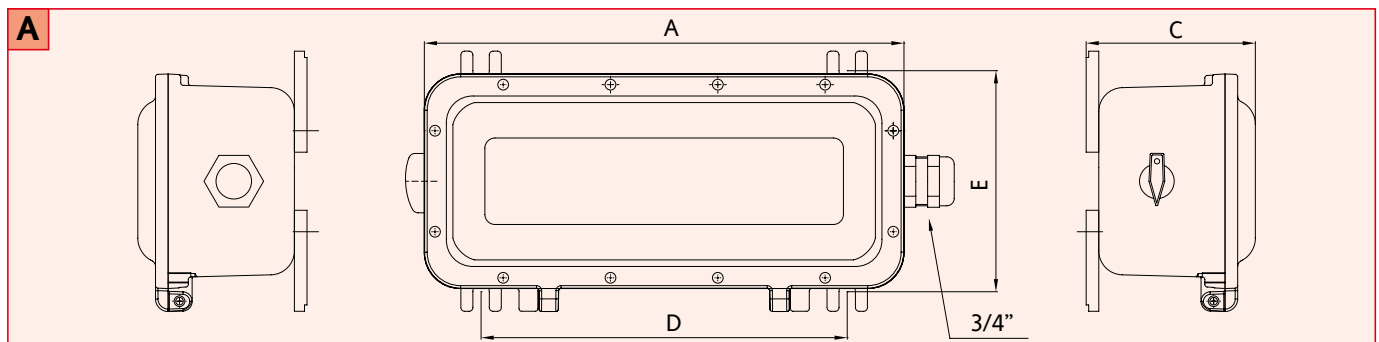
EXL Technical data

CODE	POWER SUPPLY	LAMP	mA (LED)	TEMPERATURE CLASS (GAS)	TEMPERATURE CLASS (DUSTS)	EMERGENCY UNIT	AUTONOMY
LIGHTING FIXTURES FOR FLUORESCENT TUBE LAMPS							
EXL08	220 ÷ 240V AC	8 W	-	T6	T 85°C	-	-
EXL08E-3	220 ÷ 240V AC	8 W	-	T6	T 85°C	3,6V - 4A/h	3h
EXL08ESA-3	220 ÷ 240V AC	8 W	-	T6	T 85°C	3,6V - 4A/h	3h
LIGHTING FIXTURES FOR HIGH EFFICIENCY LED LAMPS							
EXL08L	120 ÷ 240V AC/DC	4,8 W	350	T6	T 85°C	-	-
EXL08LE	220 ÷ 240V AC	4,8 W	350	T6	T 85°C	3,6V - 2A/h	3h
EXL208L	120 ÷ 240V AC/DC	9,16 W	350	T6	T 85°C	-	-

EXL Technical features

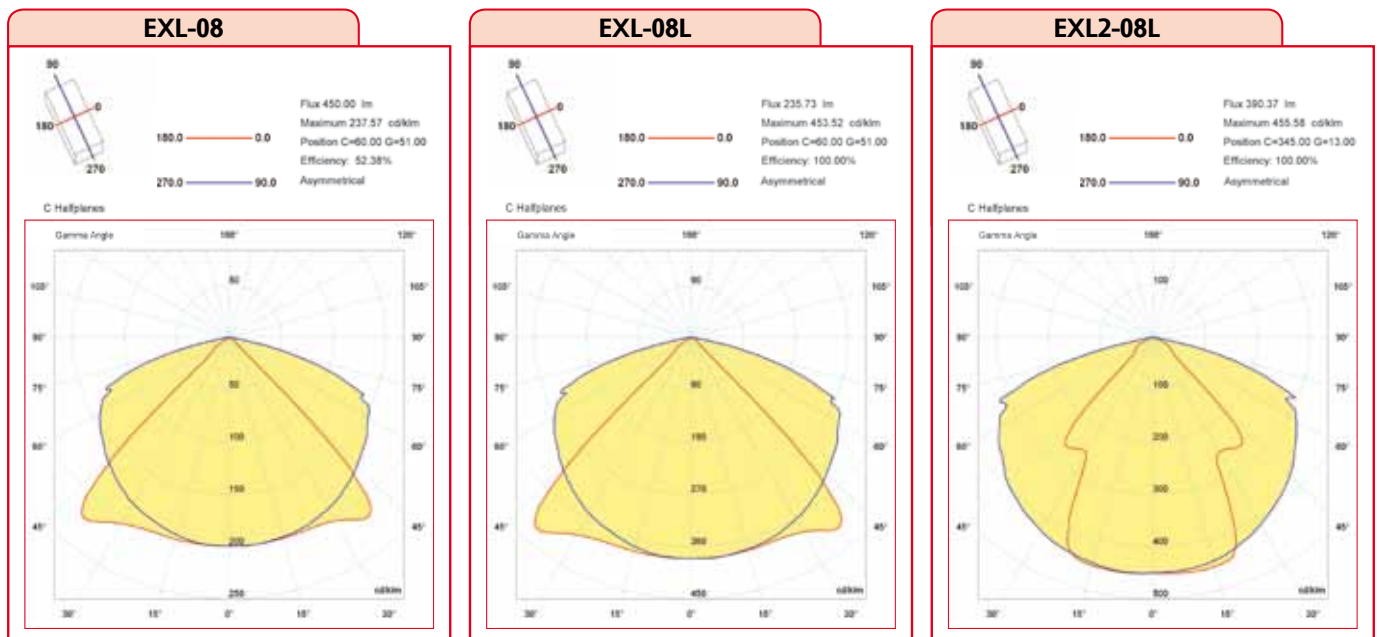
CODE	A [mm]	B [mm]	C [mm]	D [mm]	E [mm]	WEIGHT [Kg]	CABLE ENTRY	DETAIL
EXL08	380	170	135	290	175	8,00	1 x 3/4"	A
EXL08E-3	380	170	135	290	175	8,00	1 x 3/4"	A
EXL08ESA-3	380	170	135	290	175	8,00	1 x 3/4"	A
EXL08L	380	170	135	290	175	8,00	1 x 3/4"	A
EXL08LE	380	170	135	290	175	8,00	1 x 3/4"	A
EXL208L	380	170	135	290	175	8,00	1 x 3/4"	A

Reference details



EXL On request accessories

CODE	DESCRIPTION	MATERIAL
2070.00088	SELF-ADHESIVE GREEN "EXIT" LABEL	POLYESTER



REMARK: Due to the development of the national and international specifications and of the technology, the above technical characteristics showed on this bulletin can be considered as binding on our confirmation only.